



Das Auto.

The new Golf Cabriolet





MY HEAVEN.
MY NEW GOLF CABRIOLET.

IT'S AMAZING HOW EVEN
THE MOST MAGNIFICENT SUNRISE
CAN FADE INTO THE BACKGROUND.

Sunrise over Paris, 6.17 a.m.

Illustration shows Tungsten Silver
Metallic paint finish;
17 inch "Porto" rim.



DRIVE WITH THE SUN BESIDE YOU AND ADMIRE THE VIEWS.

Daybreak over Dubai, 9.17 a.m.



01 TEXTILE HOOD | S

01 The **fully automatic, electric-hydraulic textile hood** with integrated glass rear window can be opened in less than ten seconds and when driving at a speed of up to 30 kph.

02 The **bi-xenon headlights** include dynamic cornering lights and LED daytime driving lights. During the journey, motors in the headlights adapt light distribution according to speed.

03 **Darkened LED tail lights** give the rear design a sporty, elegant character.

04 There is a range of different wheels to choose from. It includes: the 7 J x 17 "**Seattle**" alloy wheel with size 225 tyre; the 7 J x 17 "**Porto**" alloy wheel with size 225 tyre; the 7 1/2 J x 17 **Volkswagen Exclusive*** "**Salamanca**" alloy wheel with Sterling Silver paint finish and size 225 tyre; and the **18 inch Volkswagen Exclusive*** "**Charleston**" alloy wheel which is painted black, has a bright finish and is fitted with size 225 tyre.

*Feature offered by Volkswagen R GmbH. Please refer to www.volkswagen-r.de for further information.

Our vehicles are equipped with summer tyres as standard. As of 04.12.2010 you are required by law in the Federal Republic of Germany to equip your vehicle with M+S tyres or all-weather tyres in wintry weather conditions with black ice, packed snow, slush, ice or slippery frost. Your local Volkswagen Dealer will be pleased to advise you.

EXTERIOR



02 BI-XENON HEADLIGHTS | SO



03 DARKENED LED TAIL LIGHTS | S



04 "SEATTLE" RIM, 17 INCH | SO



04 "PORTO" RIM, 17 INCH | SO



04 "SALAMANCA" RIM, 17 INCH | SO



04 "CHARLESTON" RIM, 18 INCH | SO

standard | S optional extra | SO

WATCH THE SPECTACULAR SKIES TO THE ACCOMPANIMENT OF YOUR FAVOURITE MUSIC.

The Maldives at dawn, 10.17 a.m.

COMFORT



LEATHER-COVERED MULTIFUNCTION STEERING WHEEL |SO
The leather-covered multifunction steering wheel can be used for convenient operation of a radio/navigation system and mobile phone. In conjunction with a dual clutch gearbox DSG, gears can be changed via paddles without taking your hands from the wheel.



"PREMIUM" MULTIFUNCTION DISPLAY |SO
The large, high-resolution TFT screen of the "Premium" multifunction colour display offers a brilliant depiction of important information during the journey, route guidance from the navigation system, or the status of your mobile phone when connected to the system.



"RNS 510" RADIO/NAVIGATION SYSTEM |SO
The MP3 and WMA compatible "RNS 510" radio/navigation system with voice control and picture navigation has a touch screen, DVD drive, 30 gigabyte hard disk, SD card slot, AUX-IN multimedia socket and "Plus" multifunction display.



"CLIMATRONIC" AIR CONDITIONER |SO
The "Climatronic" air conditioner has separate temperature control for the driver and front passenger. Both front passengers can therefore set their preferred temperature individually.

The temperature display shown applies to the "RCD 510" radio, and the "RNS 310" or "RNS 510" radio/navigation system. The display is different on the "RCD 310" radio.

FILLING UP ON SUNSHINE IS EASY.
SO IS SAVING ENERGY.

Twilight over Wellington, 5.17 p.m.



Think Blue.



BLUEMOTIONTECHNOLOGIES | SO

The new Golf Cabriolet combines sporty driving enjoyment with economy. This is due to innovative technologies such as the TSI and TDI engines or the dual clutch gearbox DSG which offer impressive pulling power together with smooth running. At the same time, they are the basis for the sustainable BlueMotionTechnologies. These include the start/stop system, regenerative braking and many other measures to reduce consumption. When driving the new Golf Cabriolet with the "BlueMotion Technology" specification, you therefore not only look after the environment but also your purse.



PETROL ENGINE WITH TSI TECHNOLOGY | SO

The combination of direct petrol injection and intelligent charging technology enables the petrol engines with TSI technology to work particularly effectively and combine advantages such as high torque and low consumption.



DUAL CLUTCH GEARBOX DSG | SO

The dual clutch gearbox DSG is a milestone in the development of gearbox engineering. This automatic gearbox changes almost imperceptibly into the next, pre-selected gear in only a few hundredths of a second and without interruption of power flow.

ENGINES

		77 kW (105 bhp) TSI	77 kW (105 bhp) TSI BlueMotion Technology	118 kW (160 bhp) TSI	77 kW (105 bhp) TDI ²⁾	77 kW (105 bhp) TDI ²⁾ BlueMotion Technology
fuel consumption, litres/100 km¹⁾	with manual gearbox: urban/extra-urban/combined with dual clutch gearbox DSG: urban/extra-urban/combined	6-speed 7.3/5.1/5.9	6-speed 6.9/5.0/5.7	6-speed 8.3/5.4/6.4 7-speed 7.8/5.4/6.3	5-speed 5.6/4.3/4.8	5-speed 5.2/4.1/4.4
CO₂ emission combined, g/km¹⁾	with manual gearbox: with dual clutch gearbox DSG:	139 –	132 –	150 148	125 –	117 –

¹⁾ The fuel consumption and emission figures have been determined in accordance with the measuring method stipulated (the version of regulation [EC] 715/2007 which is currently valid). Note in accordance with the version of directive 1999/94/EC which is currently valid: these figures do not refer to a particular vehicle and do not constitute part of the offer but are purely for comparison purposes between the various types of vehicle. In addition to the fuel efficiency of a car, driving behaviour as well as other non-technical factors play a role in determining a car's fuel consumption and CO₂ emissions. CO₂ is the main greenhouse gas responsible for global warming. A guide on fuel consumption and CO₂ emissions which contains data for all new passenger car models is available free of charge at every point of sale in the European Union and, for

prospective buyers in Germany, at DAT Deutsche Automobil Treuhand GmbH, Hellmuth-Hirth-Strasse 1, 73760 Ostfildern. ²⁾ This vehicle is fitted with a regulated diesel particulate filter. In the Federal Republic of Germany it is taxed up to 31. 03. 2011 at an annual rate of 120 € less per 100 cm³ cubic capacity or part thereof than vehicles without a diesel particulate filter. The diesel particulate filter is a continuously self-regenerating system. In rare, exceptional cases, individual driving behaviour is to be temporarily adapted to this. Information on this is available at your Volkswagen Dealer and via our telephone No. 0800 – VOLKSWAGEN (0800 – 86 55 79 24 36) which is free of charge in the Federal Republic of Germany.

INTERIOR



01 In the **interior**¹⁾, height-adjustable de luxe seats give good support and the Titanium Black “Scout” cloth upholstery harmonises with the “Matte Chrome” inserts on the instrument panel and door panel trim. For your comfort and convenience, there is an “easy entry” function, a “Climatic” air conditioner, two cup holders, two reading lights, and a centre console with one of many storage pockets.

02 The **windbreak** protects you from air turbulence in the neck area and lessens annoying wind noise.

03 The **“Performance” equipment package**²⁾ includes “Vienna” leather trim, “Black Stripe” aluminium inserts on the instrument panel and door panel trim, bi-xenon headlights with dynamic cornering lights, and an “RCD 310” radio.

1) Some of the features shown in the illustration are options at extra charge. 2) Feature offered by Volkswagen R GmbH. Please refer to www.volkswagen-r.de for further information.

01 INTERIOR | S



02 WINDBREAK | SO

standard | S optional extra | SO



03 “PERFORMANCE” EQUIPMENT PACKAGE | SO

NOTHING COMPARES WITH
THE BREATHTAKING COLOURS
OF THE SKY...

Sunset over Honolulu, 7.17 p.m.



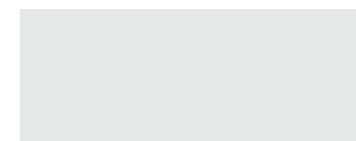
Illustration shows Sunset Red Metallic paint finish,
18 inch “Charleston” rim.

... BUT THE EXCEPTION PROVES THE RULE.

Evening sky over
San Francisco, 9.17 p.m.



PAINT FINISHES



PURE WHITE |S
solid paint 0Q



DARK PURPLE |SO
metallic paint 0K



SHARK BLUE |SO
metallic paint 5R



SUNSET RED |SO
metallic paint 6K



REFLEX SILVER |SO
metallic paint 8E



TUNGSTEN SILVER |SO
metallic paint K5



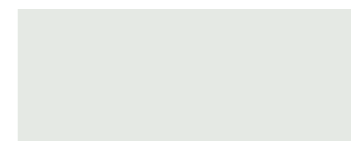
UNITED GREY |SO
metallic paint X6



NIGHT BLUE |SO
metallic paint Z2



DEEP BLACK |SO
pearl effect paint 2T



ORYX WHITE* |SO
mother-of-pearl effect paint 0R

SEAT UPHOLSTERY



TITANIUM BLACK |S
"Scout" cloth upholstery UH



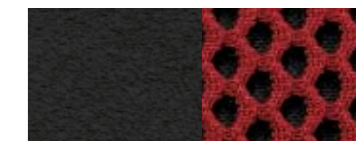
TITANIUM BLACK |SO
"Scout"/"Merlin" cloth upholstery UH



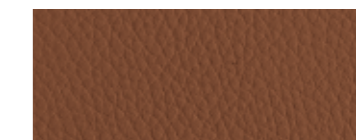
PEARL GREY |SO
"Scout"/"Merlin" cloth upholstery UJ



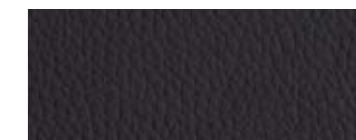
TITANIUM BLACK |SO
Alcantara/"Catch Up" cloth UH



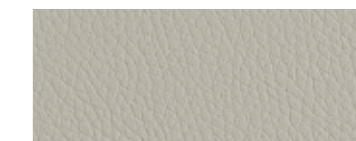
TITANIUM BLACK/SUNSET RED |SO
Alcantara/"Catch Up" cloth UK



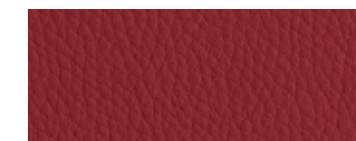
TRUFFLE |SO
"Vienna" leather LF



BLACK |SO
"Vienna" leather LE



CERAMIQUE* |SO
"Vienna" leather LJ



SALSA RED* |SO
"Vienna" leather LR

*Will be introduced at a later date.
The textile hood is always black.
The illustrations on these pages can only be regarded as a general guide. The printing process cannot render the attractive paint finishes and seat upholstery with absolute accuracy.

ALL THAT GLITTERS
LIKE STARLIGHT
IS NOT LIGHT YEARS AWAY.
Night sky over Rio de Janeiro, 2.17 a.m.



SAFETY AND SECURITY



"REAR ASSIST" REVERSING CAMERA |SO
Images taken by the "Rear Assist" reversing camera are shown on the radio display. The clear view of the area behind the vehicle helps to make parking easier.

Illustration shows "RNS 510". Only in conjunction with "RCD 510" radio and "RNS 510" radio/navigation system.



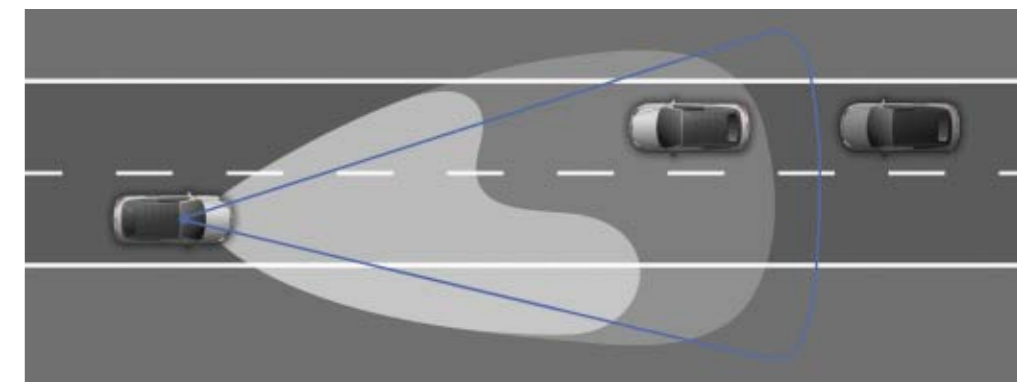
AIRBAG SYSTEM |S
Front and side airbags for the driver and front passenger, a knee airbag for the driver, and head airbags for the first row of seats ensure optimum occupant protection. The airbags are triggered within a few milliseconds in the event of a collision.



ACTIVE ROLL-OVER PROTECTION SYSTEM |S
The fully integrated roll-over protection system is active when the roof is open and when closed. Should the worst come to the worst, the supports are extended automatically within 0.25 seconds to protect the occupants.



"PLUS" ANTI-THEFT WARNING SYSTEM |SO
The anti-theft warning system with interior monitoring is equipped with sensors and reacts to manipulation on the bonnet, doors and tailgate – no matter whether the hood is open or closed.



"LIGHT ASSIST" HIGH-BEAM ASSISTANT |SO
"Light Assist" high-beam assistant recognises oncoming traffic and vehicles driving ahead and switches automatically between high and low beams. This results in more comfort, convenience and safety when driving at night.

The new Golf Cabriolet

115.1196.3718 · Printed in Germany

Subject to change without notice

Issue: March 2011

Internet: www.volkswagen.de

Your Volkswagen Dealer

Some of the vehicles shown in this brochure are equipped with options at extra charge. All details of equipment and technical data are based on the features of the German market and are in accordance with the information available at the time of going to print. Your local Volkswagen Dealer will be pleased to give you details of the differences in your specific country. Subject to change without notice. DSG®, TDI® and TSI® are registered marks of Volkswagen AG and other companies in the Volkswagen Group in Germany and in other countries. The fact that a mark is not shown with an ® sign in this document cannot be interpreted to mean that this mark is not a registered mark and/or that this mark could be used without prior approval in writing from Volkswagen AG. Volkswagen provides for the take-back and recycling of end of life vehicles. All Volkswagens can therefore be recycled in an environment-friendly way and, subject to fulfilment of legal prerequisites, can be returned free of charge. You can obtain further details of this from your local Volkswagen Dealer, on our Internet website www.volkswagen.de and under the telephone No. 0800-VOLKSWAGEN (0800-8655792436) which is free of charge in the Federal Republic of Germany.