



Das Auto.

The new Golf Sportsvan



THE CITY AWAKES. AND SO DOES A WORLD OF POSSIBILITIES.

The great thing about life is that it's as spontaneous as we are. It's even better when having the right car means you can be prepared for anything. That's why we built the new Golf Sportsvan. With a lot of features to make driving easier. With spaciousness that's really earned the name. And with a design that's worth a second look – thanks to such details as **bi-xenon headlights** and **chrome inserts on the radiator grille**. It doesn't matter what life has in store: you will look good in every situation. |SO





**AT ITS BEST.
AT ANY TIME OF DAY.**

We all like to look our best, preferably from first thing in the morning. From now on, you don't even need to get out your tracksuit to achieve that; you just need to get your new Golf Sportsvan out of the garage. Its dynamic appearance with a sloping rear window and gently falling roof line will make you a little bit more sporty straight away.



TAKE OFF, WHILE LEANING BACK.

There are a lot of good ways to start the day. Jogging, for example, or morning gymnastics. But there is a more relaxing way. The **tilting panoramic/sliding roof** offers you as much headroom and fresh air as you like. At the push of a button. The various opening settings allow you to avoid turbulence even at high speeds. And, if you should ever have had enough of the sun, the electric blind will provide protection – even with the sliding roof open. | **SO**



THE FIRST BREAK OF THE DAY: ON YOUR WAY TO WORK.

When you've got one appointment after another, the breaks in between become even more important. So it's good to have places where you feel comfortable. The **interior** of the new Golf Sportsvan is one such place. All instruments in the cockpit are ergonomically arranged to make driving as pleasant for you as possible. This includes the heated multifunction leather steering wheel and the standard "Composition Touch" radio system with a 12.7 cm (5-inch) touchscreen and intuitive operation. The decorative trim – optionally available in piano lacquer – and numerous chrome applications set the interior apart visually. It goes without saying that the new Golf Sportsvan is also technically state of the art, with the mobile online services "Car-Net" and the Wi-Fi hotspot.



1) Will be introduced at a later date.

Fuel consumption in litres/100 km: combined, between 5.6 and 3.9; CO₂ emissions in g/km: combined, between 130 and 101.

Illustration includes some optional equipment at an extra charge.

IN A NICE PLACE, GOING NICE PLACES.

Regardless of your destination: getting there in the new Golf Sportsvan will be half the fun. The comfortably upholstered **sports seats** with integrated lumbar supports offer secure support, and the Ceramique "Vienna" leather finish is of a very high quality. At the same time, the raised seat position allows convenient entry to and exit from the vehicle as well as a better view. The **DYNAUDIO sound system** with centre speaker, which is adjusted precisely to the interior, and the **ambient lighting** ensure a pleasant atmosphere. Thanks to the many **storage compartments**, there's space for everything you might need on a long or a short journey. |SO



ROOM FOR EVERYTHING THAT THE DAY HAS IN STORE

Taking the children to sport practice, carrying all the equipment you need for your holiday or going to get the weekly shopping from the supermarket: the new Golf Sportsvan has space for everything except restrictions. At a volume of 500 litres, the **luggage compartment** is already generous, but by folding down the rear-seat backrests with a simple unlocking mechanism, you can increase its volume to 1,520 litres. But it's not just on the inside that the Golf Sportsvan is so flexible. The optional folding **bicycle carrier**, for example, can be fixed to the **tow-bar**¹⁾ at the rear in next to no time. So don't let anyone tell you that a car can't be spontaneous. | **SO**

¹⁾ Will be introduced at a later date.

Fuel consumption in litres/100 km: combined, between 5.6 and 3.9; CO₂ emissions in g/km: combined, between 130 and 101.

Standard equipment/Trendline | **S** Standard for Comfortline | **C** Standard for Highline | **H** Optional extra | **SO**



Fuel consumption in litres/100 km: combined, between 5.6 and 3.9; CO₂ emissions in g/km: combined, between 130 and 101.



“Marseille” alloy wheel,
Volkswagen R GmbH,
7.5 J x 18 | SO

Standard equipment/Trendline | S Standard for Comfortline | C
Standard for Highline | H Optional extra | SO



“Toronto” alloy wheel,
6.5 J x 16 | **SO**

Standard equipment/Trendline | **S** Standard for Comfortline | **C**
Standard for Highline | **H** Optional extra | **SO**



“Dover” alloy wheel,
6.5 J x 16 | C

Standard equipment/Trendline | **S** Standard for Comfortline | **C**
Standard for Highline | **H** Optional extra | **SO**



“Dijon” alloy wheel

7 J x 17 | H

Standard equipment/Trendline | **S** Standard for Comfortline | **C**
Standard for Highline | **H** Optional extra | **SO**



“Geneva” alloy wheel,
7 J x 17 | **SO**

Standard equipment/Trendline | **S** Standard for Comfortline | **C**
Standard for Highline | **H** Optional extra | **SO**



“Serron” alloy wheel,
Volkswagen R GmbH,
7.5 J x 18 | SO

Standard equipment/Trendline | **S** Standard for Comfortline | **C**
Standard for Highline | **H** Optional extra | **SO**

THE NEW GOLF SPORTSVAN _ 25

WHEELS



“Durban” alloy wheel,
7.5 J x 18 | **SO**

Standard equipment/Trendline | **S** Standard for Comfortline | **C**
Standard for Highline | **H** Optional extra | **SO**

Our vehicles are equipped with summer tyres as standard. As of 04.12.2010 you are required by law in the Federal Republic of Germany to equip your vehicle with M+S tyres or all-weather tyres in wintry weather conditions with black ice, packed snow, slush, ice or slippery frost. Your local Volkswagen dealership will be pleased to advise you.

ASSISTANCE SYSTEMS AND SAFETY



“BLIND SPOT” SENSOR WITH REAR TRAFFIC ALERT

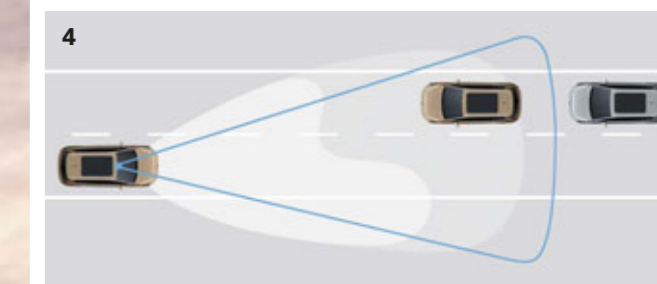
1. The “Blind Spot” sensor warns you about vehicles in your blind spot, making it easier to change lanes when overtaking. Rear Traffic Alert warns you and brakes when you exit a parking space and vehicles are approaching the rear of the vehicle.^{1), 2)} |SO



ACC AND “FRONT ASSIST”, “PARK ASSIST”

2. Adaptive cruise control ACC, for example, adapts your speed in the city or on the motorway to that of the vehicle ahead while maintaining the required distance. The area monitoring system “Front Assist” with City Emergency Brake warns you if you are approaching vehicles ahead too fast and, in an emergency, can generate enough brake pressure at low speeds to reduce the severity of a collision or even to avoid it altogether.¹⁾ |SO

3. “Park Assist”, including ParkPilot, informs you about the distance to obstacles by means of an acoustic signal and can detect parallel and perpendicular parking spaces. The driver only operates the clutch, accelerator and brake.¹⁾ |SO



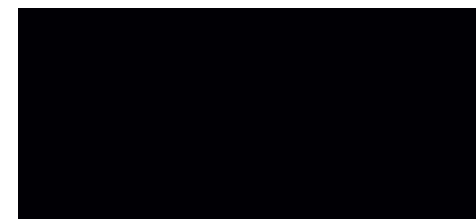
“DYNAMIC LIGHT ASSIST”, DCC

4. The dynamic high-beam control “Dynamic Light Assist” uses a camera to detect both approaching vehicles and vehicles in front and automatically dips the beam in this area. This improves the illumination of the road without dazzling other road users. |SO

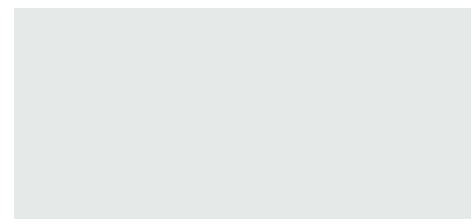
5. The DCC adaptive chassis control including driving mode selection facilitates individual damper set-up as well as allowing it to be automatically dynamically adjusted to the driving situation.²⁾ |SO

PAINT FINISHES

BLACK |SO
SOLID PAINT A1



PURE WHITE |SO
SOLID PAINT OQ



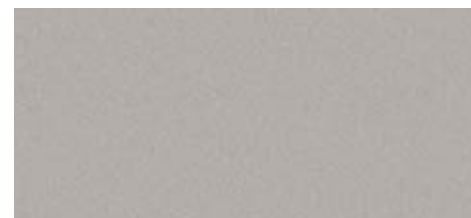
TORNADO RED |SO
SOLID PAINT G2



URANO GREY |S
SOLID PAINT 5K



TUNGSTEN SILVER |SO
METALLIC PAINT K5



REFLEX SILVER |SO
METALLIC PAINT 8E



PYRAMID GOLD |SO
METALLIC PAINT I2



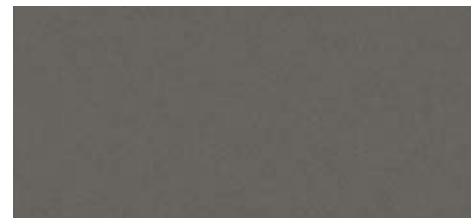
SUNSET RED |SO
METALLIC PAINT 6K



PACIFIC BLUE |SO
METALLIC PAINT D5



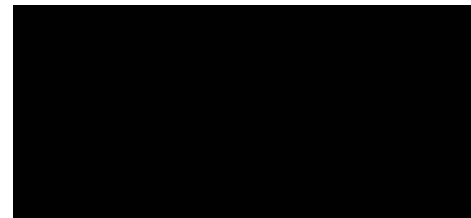
LIMESTONE GREY |SO
METALLIC PAINT Z1



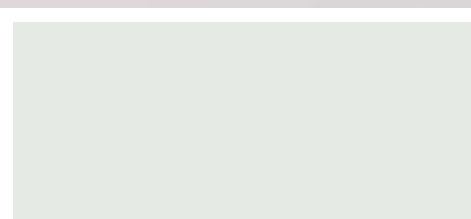
NIGHT BLUE |SO
METALLIC PAINT Z2



DEEP BLACK |SO
PEARL-EFFECT PAINT 2T

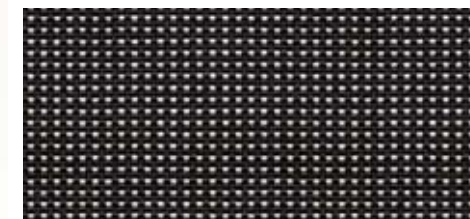


ORYX WHITE |SO
MOTHER-OF-PEARL-EFFECT PAINT OR



SEAT UPHOLSTERY

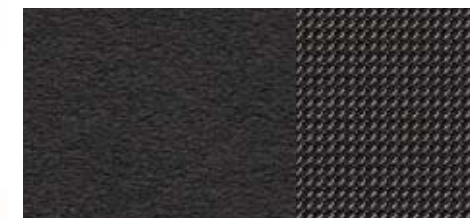
“PEPPER” FABRIC SEAT UPHOLSTERY |S
TITANIUM BLACK TW



“MEL STRIPE” FABRIC SEAT UPHOLSTERY |SO
TITANIUM BLACK TW



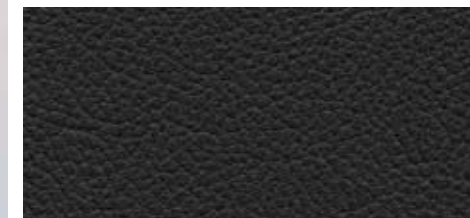
ALCANTARA/“GLOBAL” FABRIC |H
TITANIUM BLACK/DARK QUARTZITE TW



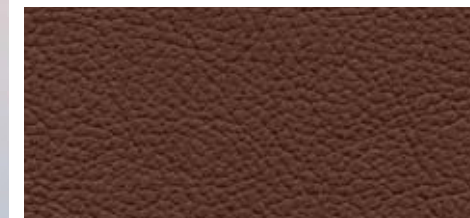
ALCANTARA/“GLOBAL” FABRIC |H
SHETLAND/SHETLAND XW



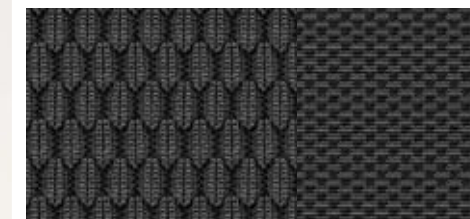
“VIENNA” LEATHER |SO
TITANIUM BLACK TW



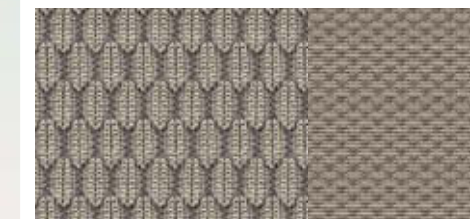
“VIENNA” LEATHER |SO
MARRAKESH YW



“ZOOM/MERLIN” FABRIC SEAT UPHOLSTERY |C
TITANIUM BLACK TW



“ZOOM/MERLIN” FABRIC SEAT UPHOLSTERY |C
SHETLAND XW



ALCANTARA/“GLOBAL” FABRIC¹⁾ |H
CERAMIQUE/CERAMIQUE LK



“VIENNA” LEATHER |SO
CERAMIQUE LQ



¹⁾ Will be introduced at a later date.

The illustrations on these pages can only be regarded as a general guide. The printing process cannot render the attractive paint finishes and seat upholstery with absolute accuracy.

Standard equipment/Trendline | S Standard for Comfortline | C Standard for Highline | H Optional extra | SO

CONSUMPTION, CO₂ EMISSIONS AND EFFICIENCY CLASSES

Engines	63 kW (85 bhp) TSI ^{3), 4)}	110 kW (150 bhp) TSI ⁴⁾	81 kW (110 bhp) TDI ⁵⁾	110 kW (150 bhp) TDI ⁵⁾
Fuel consumption, litres/100 km¹⁾				
with manual gearbox:	5-speed	6-speed	5-speed	6-speed
urban	6.1 – 5.9	7.0 – 6.8	4.6 – 4.5	5.1 – 5.0
extra-urban	4.5 – 4.2	4.9 – 4.6	3.7 – 3.5	4.0 – 3.8
combined	5.2 – 4.9	5.6 – 5.4	4.1 – 3.9	4.4 – 4.2
with DSG dual clutch gearbox:	–	7-speed	7-speed	6-speed
urban	–	6.5 – 6.4	4.5 – 4.4	5.4 – 5.3
extra-urban	–	4.8 – 4.6	4.0 – 3.8	4.4 – 4.2
combined	–	5.5 – 5.2	4.2 – 4.0	4.8 – 4.6
CO₂ emissions combined, g/km¹⁾				
with manual gearbox:	119–114	130 – 125	106 – 101	115–110
with DSG dual clutch gearbox:	–	126 – 121	109 – 104	125 – 120
Efficiency class²⁾				
with manual gearbox:	B	B	A–A+	A
with DSG dual clutch gearbox:	–	B	A–A+	B–A

- 1) The figures listed have been determined in accordance with the measuring method stipulated. These figures do not refer to a particular vehicle and do not constitute part of the offer, but are purely for comparison purposes between the various types of vehicle. In addition to the fuel efficiency of a car, driving behaviour as well as other non-technical factors, for example the ambient conditions, play a role in determining a car's fuel consumption and CO₂ emissions. Additional equipment and accessories (add-on parts, tyres etc.) may change relevant vehicle parameters such as weight, rolling resistance and aerodynamics, thus affecting consumption and driving performance values beyond the effects of weather and traffic conditions. Information on fuel consumption and CO₂ emissions apply – when track widths are specified – depending on the selected tyre format and optional equipment. Note in accordance with the current version of Directive 1999/94/EC: further information on the official fuel consumption and official specific CO₂ emissions of new passenger cars is given in a guide containing data on fuel consumption, CO₂ emissions and power consumption for new passenger car models. It is available free of charge at every point of sale in the European Union and, for prospective buyers in Germany, at DAT Deutsche Automobil Treuhand GmbH, Hellmuth-Hirth-Strasse 1, 73760 Ostfildern, Germany, or at www.dat.de.
- 2) Efficiency classes evaluate vehicles on the basis of CO₂ emissions, taking into account the vehicle's unladen weight. Vehicles corresponding with the average are given a D rating. A+, A, B or C ratings are given to vehicles which are better than the present-day average, and E, F or G to those below that average.
- 3) Will be introduced at a later date.
- 4) Petrol engine.
- 5) Diesel engine.

The details given on performance and consumption apply to the use of sulphur-free 95 RON premium fuel, in accordance with DIN EN 228. The fuel grade 95 RON unleaded containing a maximum of 10 per cent ethanol (E10) may in principle be used. Detailed information on the compatibility of E10 fuels can be obtained at www.volkswagen.de or at www.dat.de/e10liste/e10vertraeglichkeit.

The new Golf Sportsvan

325.1196.36.18 · Printed in Germany

Subject to change without notice · Issue: December 2013

www.volkswagen.de

Some of the vehicles shown in this brochure are equipped with options at extra charge. All details of equipment and technical data are based on the features of the German market and are in accordance with the information available at the time of going to print. Your local Volkswagen dealership will be pleased to provide you with details of the deviations in your specific country. Subject to change without notice. DSG® and TSI® are registered trademarks of Volkswagen AG and other companies in the Volkswagen Group in Germany and in other countries. The fact that a trademark is not shown with an ® sign in this document cannot be interpreted to mean that this trademark is not a registered trademark and/or that this trademark could be used without prior approval in writing from Volkswagen AG. Volkswagen provides for the return and recycling of end-of-life vehicles. All Volkswagens can therefore be recycled and, subject to fulfilment of legal prerequisites, can be returned free of charge. You can obtain further details on this from your local Volkswagen Dealer, on our website www.volkswagen.de or by calling 0800-VOLKSWAGEN (0800-8655792436), which is free of charge in the Federal Republic of Germany.

Your Volkswagen dealership